



INVEST NORTH OF 60

CANADA'S NORTHERN RESOURCE OPPORTUNITY



INVESTNORTHOF60.CA

YUKON

GOLD



PROJECT INFORMATION

Project: White Gold
Ownership: White Gold Corp.
Location: Yukon, Canada
Latitude: 62.92° North
Longitude: 139.67° West
Size: Over 315,000 hectares
Stage: Advanced
Resource: 35.2 million tonnes @
1.53 g/t Au Indicated
32.2 million tonnes @
1.22 g/t Au Inferred
Listings: TSX-V: WGO | OTCQX:
WHGOF | FRA: 29W

CONTACT INFORMATION

White Gold Corp.

82 Richmond St. East
Toronto, Ontario M5C 1P1

Telephone: 1 (647) 930-1880

Email: ir@whitegoldcorp.ca

Website: whitegoldcorp.ca

WHITE GOLD CORP.

White Gold

NEED TO KNOW

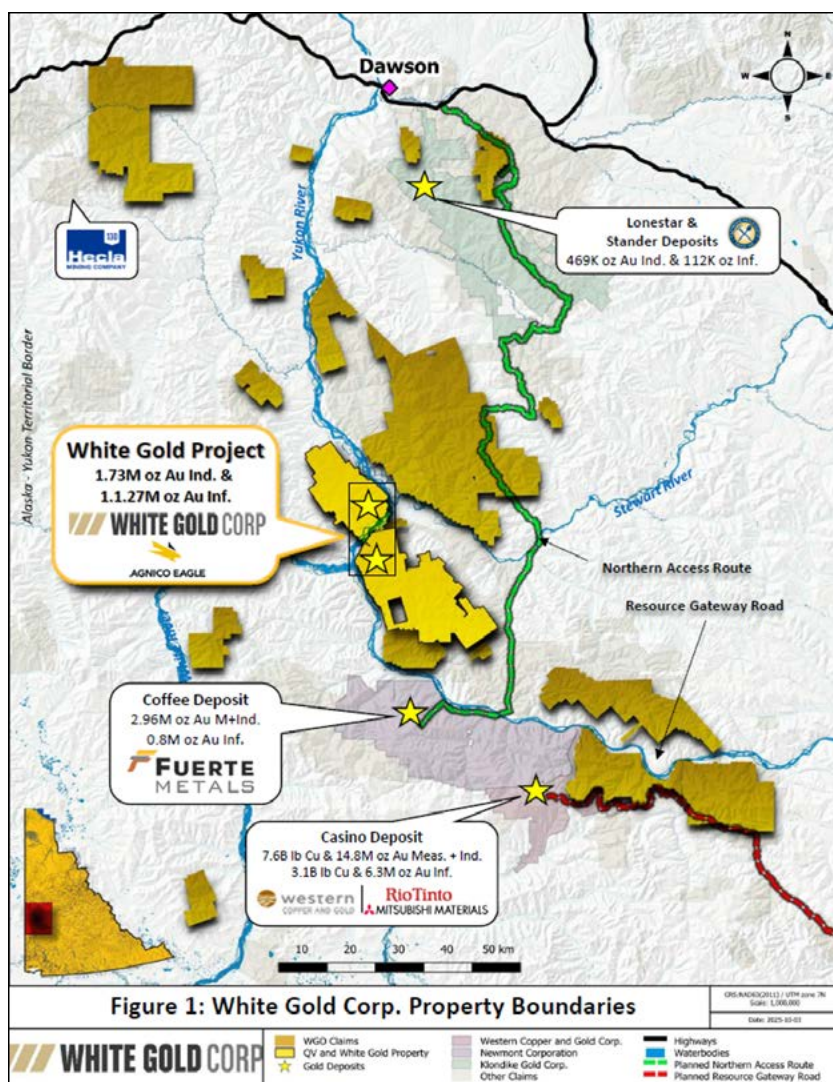
- ▶ White Gold Project:
 - Indicated Resources of 1,732,300 ounces of gold within 35.2 million tonnes grading 1.53 g/t Au, representing 57.8% of total resources.
 - Inferred Resources of 1,265,900 ounces of gold in within 32.2 million tonnes grading 1.22 g/t Au, representing 42.2% of total resources.
 - Near surface and open for expansion in several directions and at depth
 - Numerous other exploration targets in close proximity to deposit
- ▶ Unique Value Proposition – Defined Resources & Blue Sky Potential
- ▶ District Scale Land Package in Tier 1 Jurisdiction
 - Largest mineral claims holder in the White Gold District (300,000+ hectares over 21 properties)
 - Several prospective gold and critical minerals discoveries across large, district-scale land package
 - Significant ongoing mining infrastructure projects
- ▶ Experienced Management
 - Strong management, technical and advisory teams with a proven track record of advancing multi-million ounce discoveries to producing assets
 - Involved in several other major discoveries in the district
- ▶ Strong Strategic Partners – Financial backing and technical expertise from Agnico Eagle

ESG HIGHLIGHTS

White Gold respectfully acknowledges that its projects are located on traditional lands of the Tr'ondëk Hwëch'in, Selkirk and White River First Nations.

TRACK RECORD

Experienced management and technical team with over 100 years of combined experience in mineral exploration, including major discoveries in the White Gold District. Led by Shawn Ryan, our experienced team have developed an innovative data driven exploration strategy that continues to deliver significant new discoveries.



GEODATA / REPORTS

[National Instrument 43-101](#)

[August 19, 2025](#)

TEAM EXPERTISE

Management: <https://fuertemetals.com/corporate/management-technical/>



HIGHLIGHTS

- ▶ Large property portfolio in the prolific Klondike placer gold district, which has produced over 20 million ounces of placer gold since 1896, yet remains underexplored for hard-rock gold.
- ▶ Largest quartz mineral claim holder in the White Gold District with 15,500+ claims covering 315,000 hectares (3,150 km²).
- ▶ Flagship White Gold Project hosts four nearby deposits with combined resources of:
 - Indicated: 1,152,900 oz @ 2.23 g/t Au
 - Inferred: 942,400 oz @ 1.54 g/t Au
 - Golden Saddle: 1,131,700 oz Indicated @ 2.28 g/t Au; 222,900 oz Inferred @ 1.69 g/t Au
 - Arc: 21,200 oz Indicated @ 1.03 g/t Au; 204,700 oz Inferred @ 1.17 g/t Au
 - Ryan's Surprise: 227,700 oz Inferred @ 1.97 g/t Au
 - VG: 287,100 oz Inferred @ 1.53 g/t Au
- ▶ District-scale potential supported by nearby undeveloped deposits:
 - Casino (WRN): 14.8 Moz Au & 7.6 Blb Cu (M&I); 6.3 Moz Au & 3.1 Blb Cu (Inferred)
 - Coffee (Newmont): 2.10 Moz Au @ 1.28 g/t (M&I); 0.20 Moz @ 1.04 g/t (Inferred)
- ▶ Project generator with a robust exploration pipeline targeting orogenic, intrusion-related, epithermal, and porphyry-style mineralization.
- ▶ Strategic partners: Agnico Eagle Mines (19.8%) and Kinross Gold (13.5%).
- ▶ Yukon offers a stable, mining-friendly jurisdiction ranked top 10 globally for mineral potential (Fraser Institute).
- ▶ The Yukon Resource Gateway Project—a \$469M federal-territorial-industry initiative—will upgrade 650 km of resource roads, improving access to the White Gold District and enhancing future development.